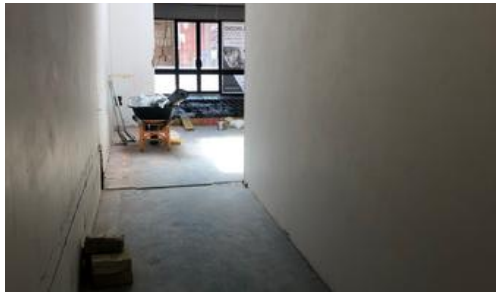




1429 Pittwater Rd, Narrabeen



In the heart of Narrabeen

Retail 110sqm

Location on the lake side of Pittwater Road there is for potential seating. The property currently has a DA approval for Bar & Restaurant also there is potential for grease trap and exhaust.

Area 110qm. This Retail space is open, bright and fresh with a new cement, floor full glass frontage, direct access to Pittwater Road with the lake at your back door.

\$45,000 plus GST per year

Features:

- DA approval for Bar & Restaurant
- Additional outdoor option available
- Glass frontage with double doors
- Excellent signage opportunities
- Substantial parking in surrounding areas

Location:

The above information provided has been furnished to us by the vendor/s. We have not verified whether or not that information is accurate and do not have any belief in one way or the other in its accuracy. We do not accept any responsibility to any person for its accuracy and do no more than pass it on. All interested parties should make and rely upon their own inquiries in order to determine whether or not this information is in fact accurate.

Price

\$45,000 plus GST per year

Property Type

Commercial

Property ID 123

Office Area 110 m2

Agent Details

Patrick Cowie - 0417 388 621

Office Details

Mosman

P.O. Box 3824 Mosman NSW 2088

Australia

0417 388 621

Patrick Cowie
REAL ESTATE