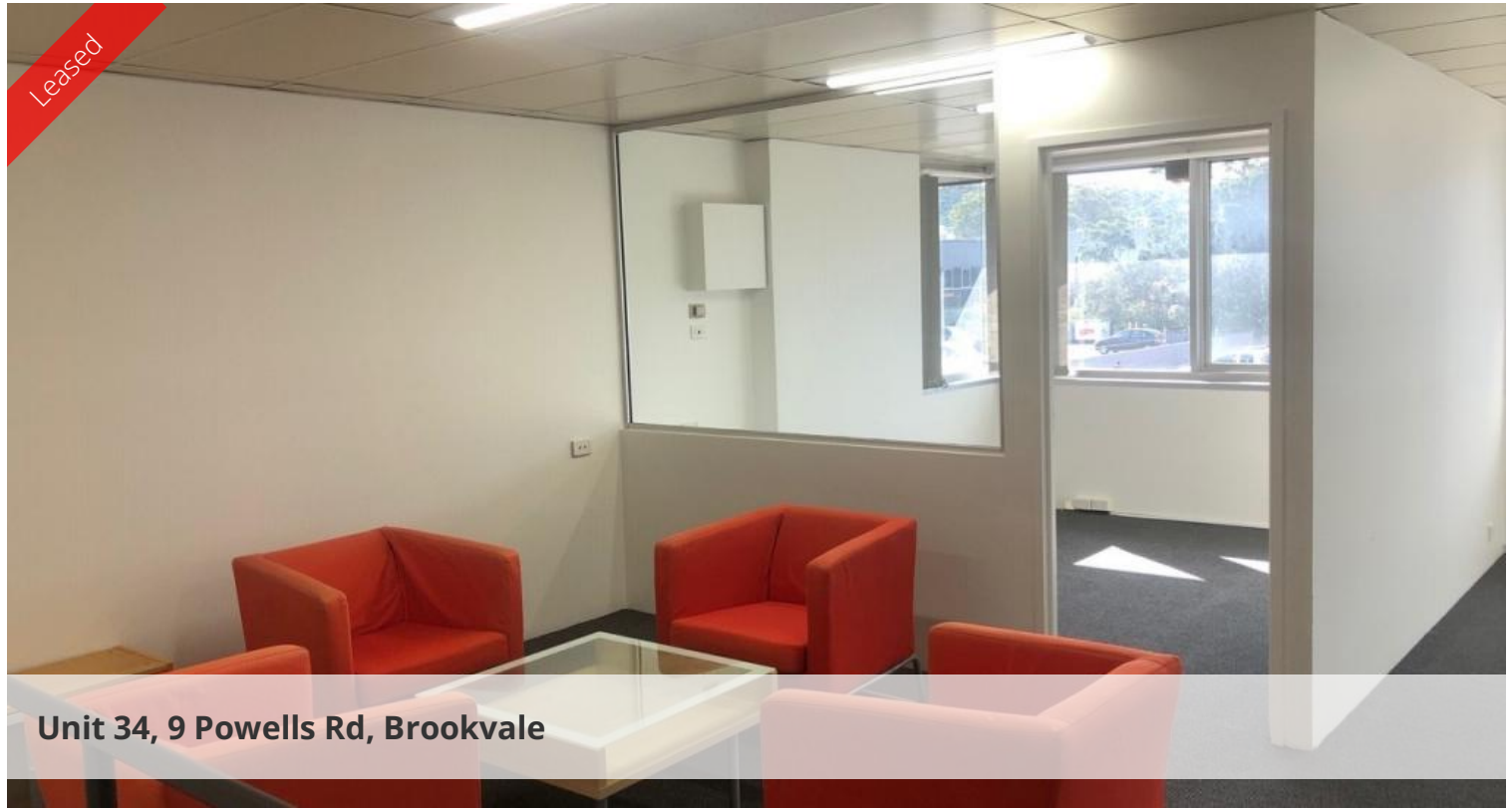


Leased



Unit 34, 9 Powells Rd, Brookvale



Light Bright Prime Position in Brookvale

Light Bright Prime Position in Brookvale

43sqm office and 12sqm to 20 sqm of Warehouse space (available at an additional cost).

This office space is located at 9 Powells Road and is bathed in natural light.

The Office suite is freshly painted with new carpet and own toilet.

12sqm to 20 sqm of Warehouse space can be available

This office is suitable for a number of businesses it also has 2 parking spaces.

Features:

- 2 Parking Spaces
- Natural light
- 12sqm to 20 sqm of Warehouse

Location: In a desirable complex with access to Powells & Mitchell Roads Brookvale.

Close to a variety of business services and Warringah Mall.

Easy access to Pittwater Road and Warringah Roads, the main arterial carriageways servicing the Northern Beaches.



Price	\$11,000 plus GST
Property Type	Commercial
Property ID	161
Office Area	43 m2
Warehouse Area	12 m2

Agent Details

Patrick Cowie - 0417 388 621

Office Details

Mosman
P.O. Box 3824 Mosman NSW 2088
Australia
0417 388 621

Patrick Cowie
REAL ESTATE ●●●●●

*Disclaimer: Whilst every effort has been made to ensure the accuracy of the information provided by our vendors, Patrick Cowie Real Estate makes no statement, representation or warranty and assumes no legal liability in relation to the accuracy of the information provided. Prospective purchasers are advised to carry out their own due diligence and investigations.

All quoted areas/measurements and approximations. Lessees/purchasers must conduct and rely on their own information.

The above information provided has been furnished to us by the vendor/s. We have not verified whether or not that information is accurate and do not have any belief in one way or the other in its accuracy. We do not accept any responsibility to any person for its accuracy and do no more than pass it on. All interested parties should make and rely upon their own inquiries in order to determine whether or not this information is in fact accurate.